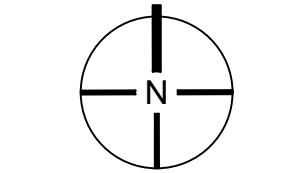


# BLACKBURN SOLAR

CATAWBA COUNTY, NC | DATE: 05.10.2023 | PROJECT NO.: 00875.00

CONCEPT SITE PLAN: NORTH



SCALE: 1"=200'

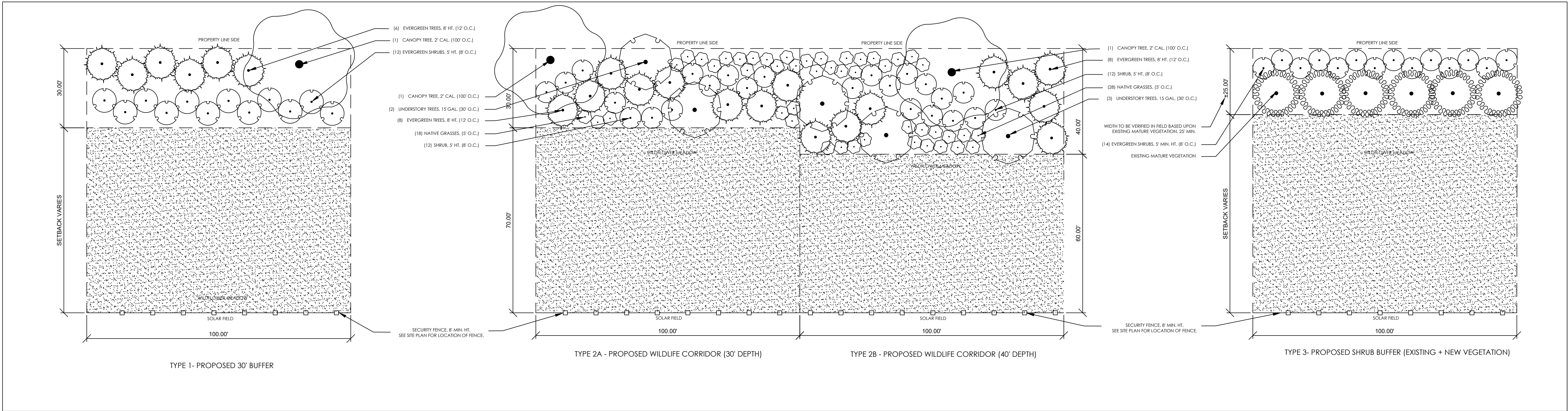
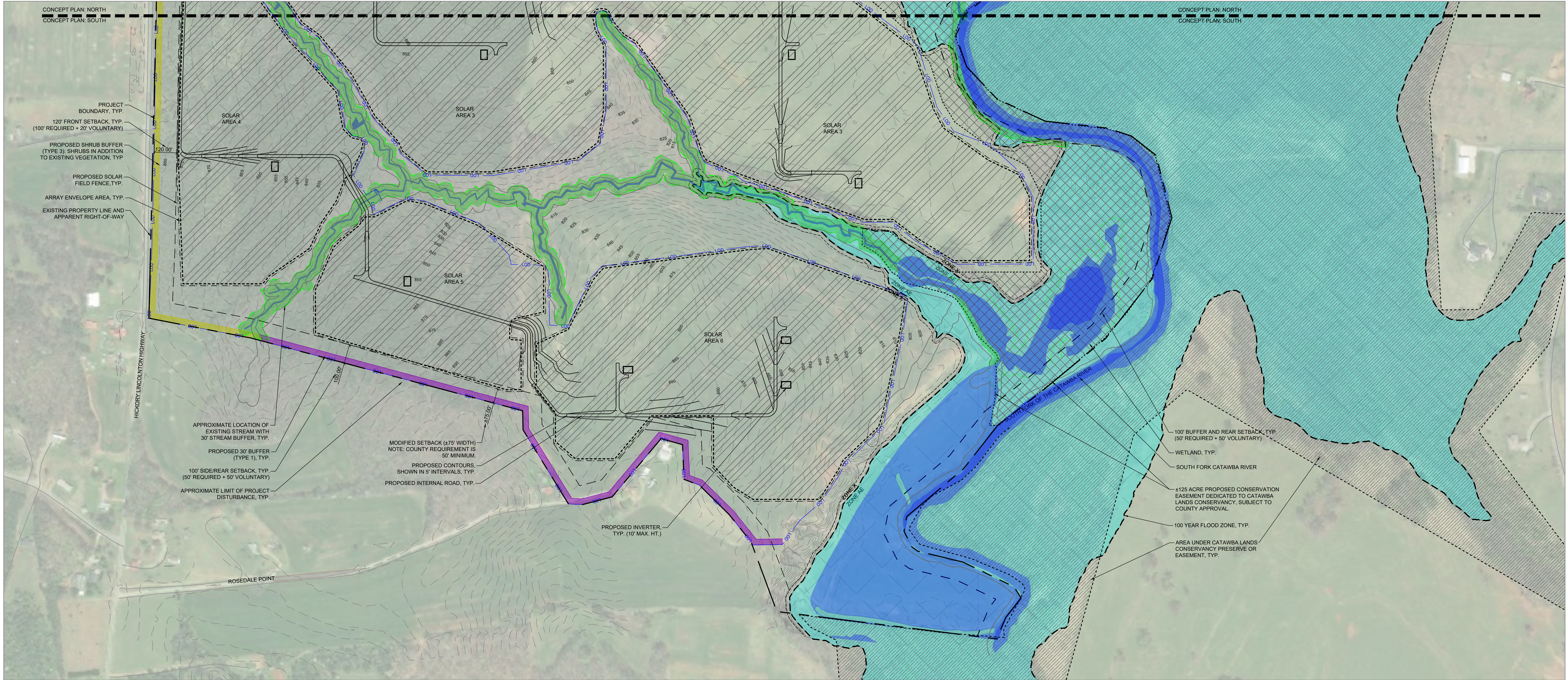


V3co.com



NC FIRM#: C-4911, C-672





LEGEND

- 30' STREAM BUFFER
- 100 YEAR FLOOD ZONE
- WATERWAYS/WETLANDS
- TYPE 1 30' PROPOSED BUFFER
- TYPE 2A 30' WILDLIFE CORRIDOR
- TYPE 2B 40' WILDLIFE CORRIDOR
- TYPE 3 PROPOSED SHRUB BUFFER (EXISTING + NEW VEGETATION)
- PROPOSED INTERIOR ROAD (16' WIDTH)
- SITE SETBACK 120' FRONT, 100' SIDE/REAR
- PROPOSED 8' HT. SECURITY FENCE AND INTERNAL SETBACK
- PROPOSED CATAWBA LANDS CONSERVANCY DEDICATION
- EXISTING CATAWBA LANDS CONSERVANCY AREA
- SOLAR ARRAY ENVELOPE (PANELS TO BE 10' MAX HT.)
- APPROXIMATE LIMIT OF PROJECT DISTURBANCE

TYPICAL NATIVE PLANT PALETTE

- CANOPY TREES 7' CAL.**
  - RED TWIG DOGWOOD
  - FLORIDA YACON
  - FLORIDA YACON
  - FLORIDA YACON
- UNDERSTORY TREES 15 CAL.**
  - CRABAPPLE
  - FLORIDA YACON
  - FLORIDA YACON
  - FLORIDA YACON
- EVERGREEN TREES 15 CAL.**
  - FLORIDA YACON
  - FLORIDA YACON
  - FLORIDA YACON
  - FLORIDA YACON
- SHRUBS 8' HT.**
  - FLORIDA YACON
  - FLORIDA YACON
  - FLORIDA YACON
  - FLORIDA YACON
- NATIVE GRASSES 3 CAL. (MAX 1 GAL.)**
  - FLORIDA YACON
  - FLORIDA YACON
  - FLORIDA YACON
  - FLORIDA YACON

SETBACKS FOR SOLAR FIELDS

- FRONT: 120' (FROM EDGE OF RIGHT-OF-WAY)
- REAR: 100'
- SIDE: 100'
- A SECURITY FENCE EQUIPPED WITH GATE AND LOCKING MECHANISM MUST BE INSTALLED AT A MINIMUM HEIGHT OF 8' ALONG ALL EXTERIOR SIDES.

CAROLINA THREAD TRAIL NOTE:

PENDING COUNTY APPROVAL, CATAWBA LANDS CONSERVANCY (CLC) AND CAROLINA THREAD TRAIL (CTT) MAY IN THE FUTURE LOCATE A PUBLIC-USE TRAIL WITHIN THE WEAZOW AREAS OF THE PROJECT SETBACK AND OTHER AREAS DEDICATED TO CLC AND/OR CTT. EITHER IN A CONSERVATION EASEMENT AND/OR ON BLACKBURN SOLAR, LLC PROPERTY FOR FUTURE AGREEMENTS BETWEEN PARTIES.

