

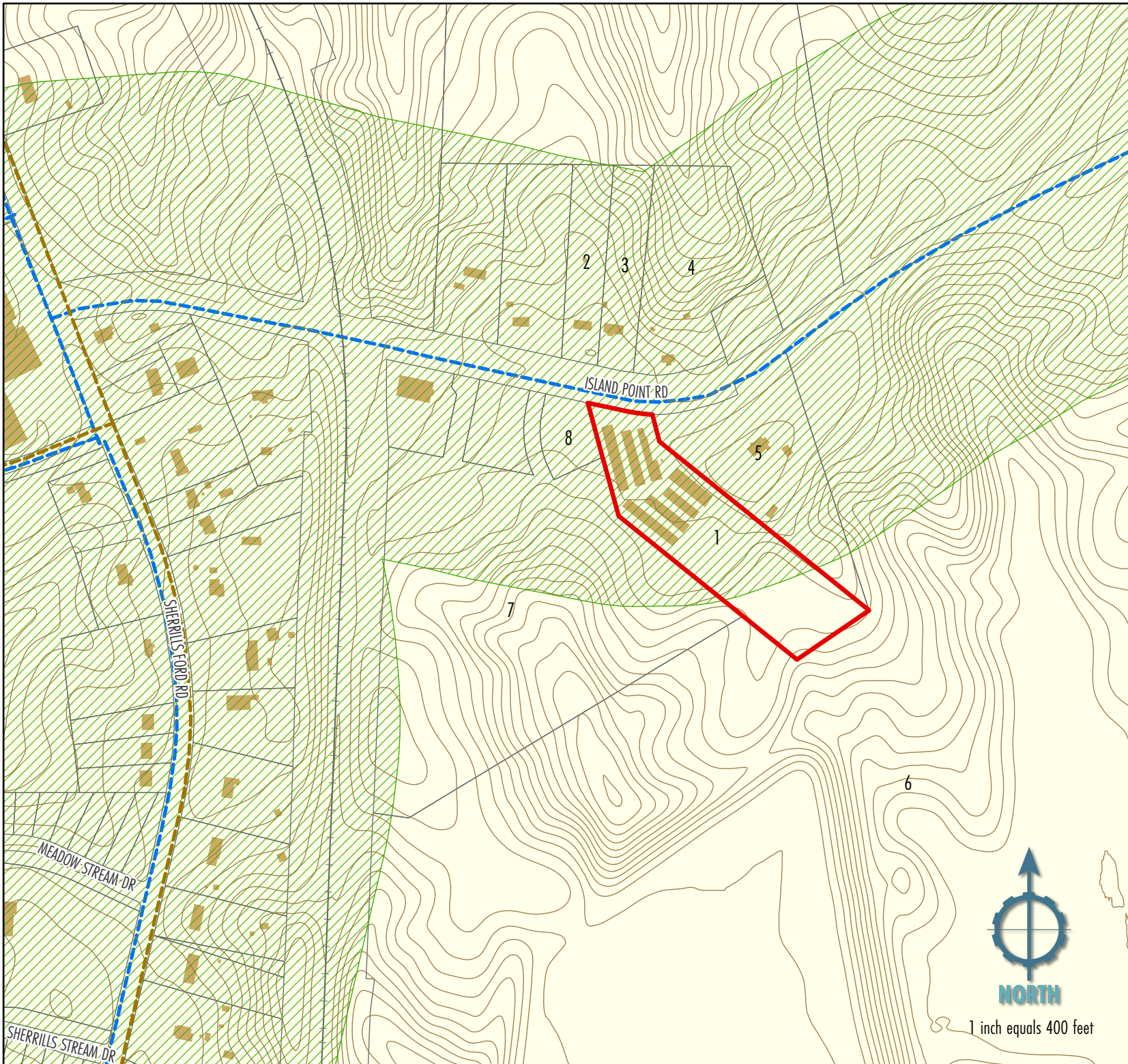
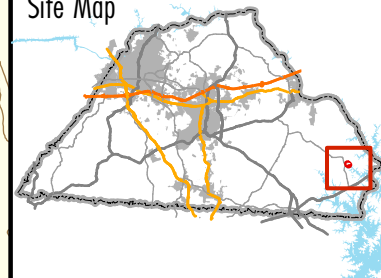
REZONING REQUEST



Applicant: Canvass Capital, LLC
PIN: 4618-01-16-3483
Current Zoning: Hwy Comm (HC)
Proposed Zoning: Planned Dlvpr (PD)
Overlays: WP-0

- Subject Parcel
- Parcels
- CTT Corridor
- Structures
- Contour Lines
- Sewer Lines
- Water Lines

Site Map



1 inch equals 400 feet