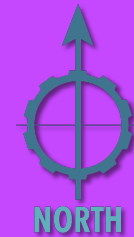
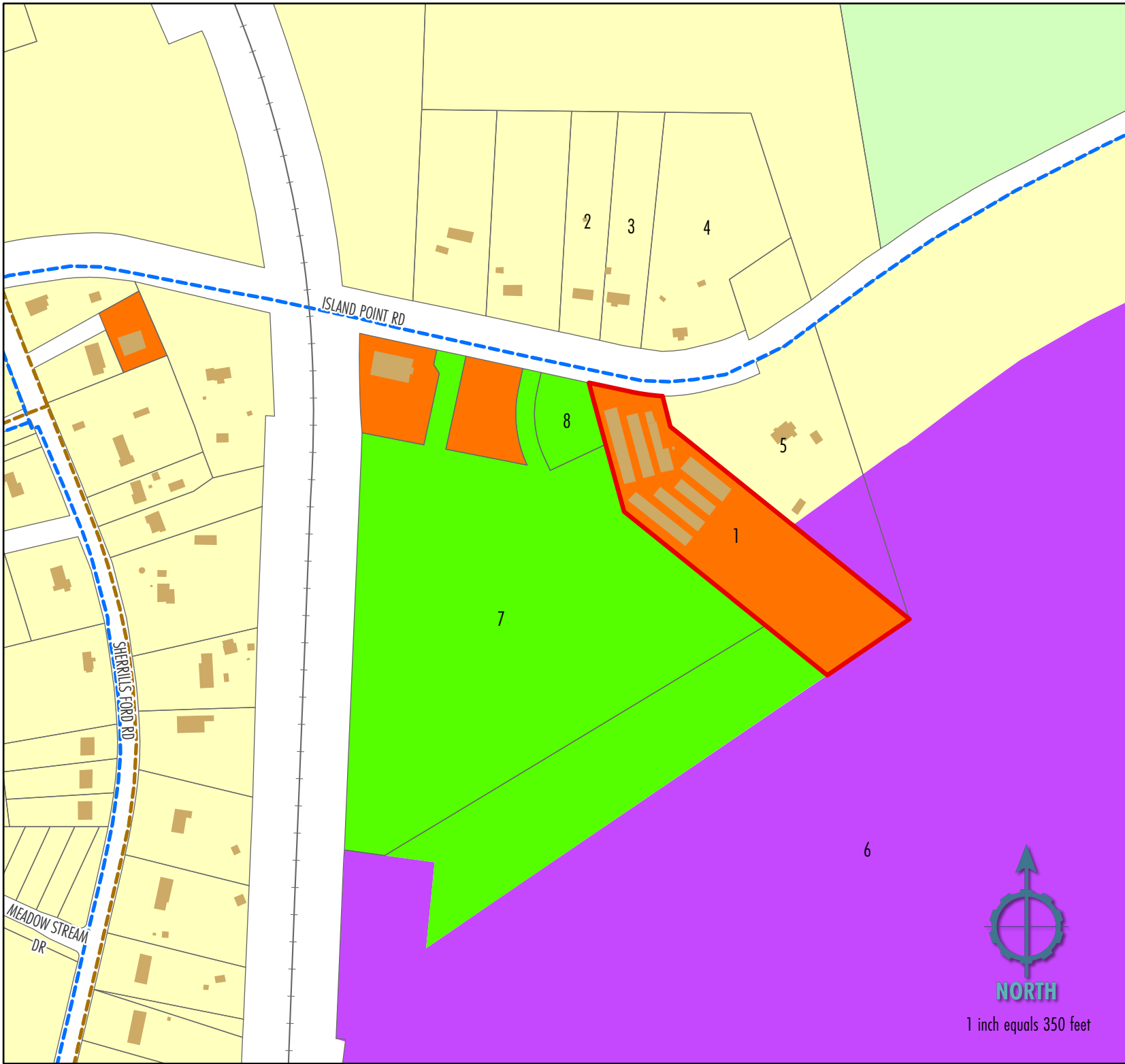


REZONING REQUEST



Applicant: Canvass Capital, LLC
PIN: 4618-01-16-3483
Current Zoning: Hwy Comm (HC)
Proposed Zoning: Planned Dlvpr (PD)
Overlays: WP-0

- Subject Parcel
- Parcels
- Structures
- Sewer Lines
- Water Lines
- County Zoning**
 - GI
 - HC
 - PD
 - PD-CD
 - R-20



1 inch equals 350 feet

Site Map

