

**ADDENDUM NO. 3**

**BID #25-1020  
PROJECT MANUAL  
FOR THE  
BLACKBURN RESOURCE RECOVERY FACILITY  
WASTE PROCESSING FACILITY PROJECT**

\*\*\*\*\*  
Signed, sealed, and dated this 9<sup>th</sup> day of July 2024

By: \_\_\_\_\_  
Bernie Garrett, P.E.

Title: Project Manager



\*\*\*\*\*  
Bidders on this Project are hereby notified that this Addendum shall be attached to and made a part of the above-named Bidding and Contract Documents dated May 2025.

The following items are issued to add to, modify, and clarify the Bidding and Contract Documents. These items shall have full force and effect as the Bidding and Contract Documents, and cost involved shall be included in the bid prices. Bids, to be submitted on the specified bid date, shall conform to the additions and revisions listed herein.

Acknowledge receipt of the Addendum by inserting its number and date on Page 2 of 4 of Section C-410 Bid Form. Failure to do so may subject the bidder to disqualification.

**GENERAL QUESTIONS & RESPONSES**

Question # 1: Could you please confirm the clearance specs underneath the truck scale and/or ramps or provide the information that you have on what that needs to look like?

Answer #1: The top deck of the scale is 2.0 feet above the top of the 4-inch concrete washout slab. The dimensions are based on Emery Winslow Scale Company Drawing No. 196637, which is included in this addendum for reference.

Question # 2: Can you provide the measured distance from where the new scales will be located, to the nearest overhead power lines? It is difficult to determine accurately from the current documentation.

Answer #2: The nearest power lines are located on Woodtech Drive on the opposite side of the road from the project. The distance from the nearest pole to the scale house is approximately 300 feet.

Addendum No. 3

Blackburn Resource Recovery Facility Waste Processing Facility Project

July 9, 2025

Question #3: Where will the excess soils from the project be stockpiled?

Answer #3: Please refer to the stockpile location figure included with this addendum.

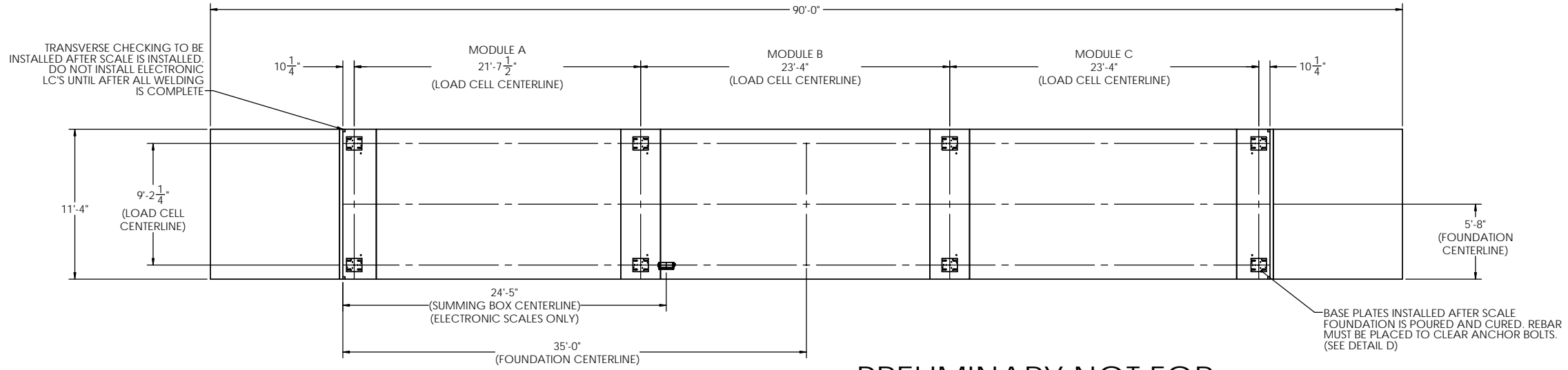
**PROJECT MANUAL**

Replace the Table 1 – Bid Form of Section C-410 with the Table 1 – Bid Form included in this addendum. Note that Item 41 – Landscape Buffer has been deleted.

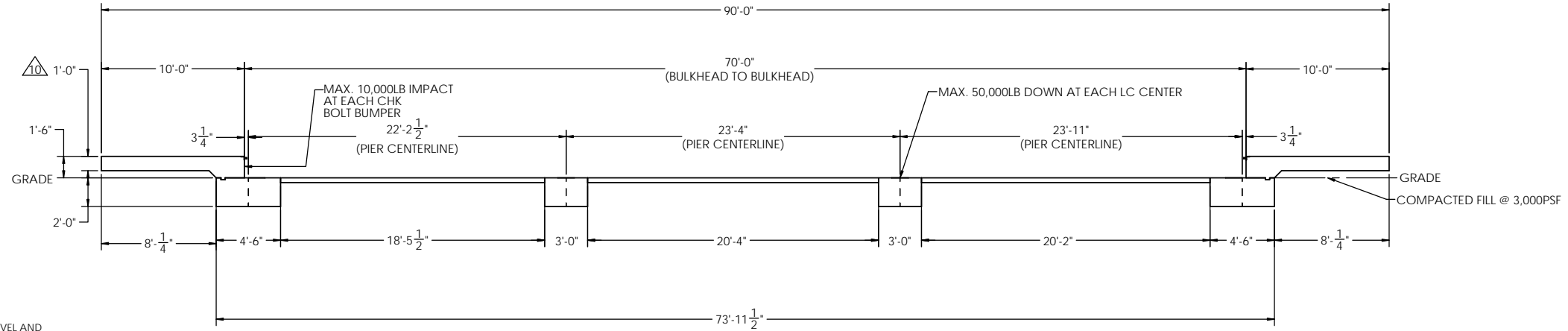
END OF ADDENDUM NO. 3

# DETAILS

REVISION		INIT	DATE
REV.	ECO		
A	-	SPJ	07/22/2019



PRELIMINARY NOT FOR CONSTRUCTION FOR ILLUSTRATION ONLY



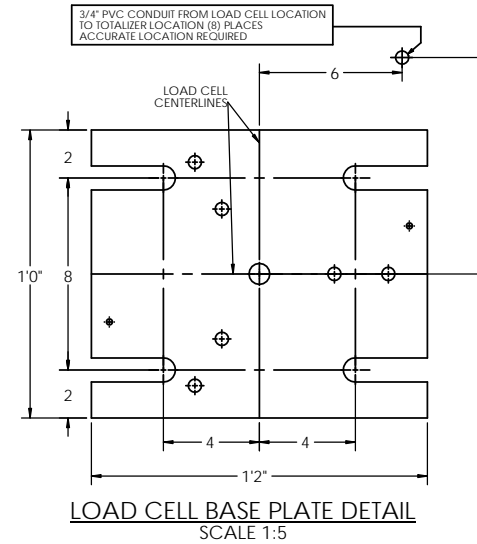
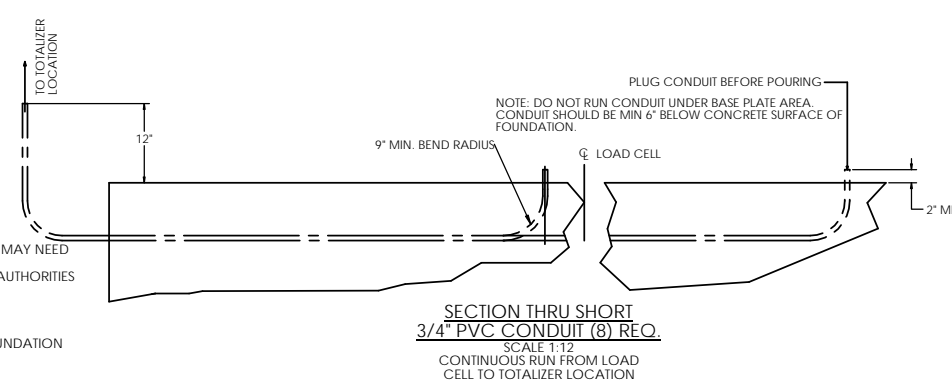
FOR NON COMMERCIAL SCALES PROVIDE AN APPROACH OF 2 FEET MINIMUM LENGTH WHICH IS LEVEL AND IN THE SAME PLANE AS THE PLATFORM.

FOR COMMERCIAL SCALES CHECK WITH LOCAL WEIGHTS AND MEASURES OFFICIALS BEFORE STARTING CONSTRUCTIONS. NATIONAL INSTITUTE OF STANDARDS AND TECHNOLOGY (NIST) HANDBOOK H44 REQUIRES:

- A) A STRAIGHT APPROACH OF AT LEAST ONE-HALF THE LENGTH OF THE PLATFORM.
- B) NOT LESS THAN 10 FEET OF APPROACH ADJECENT TO THE PLATFORM TO BE CONSTRUCTED OF CONCRETE OR SIMILAR DURABLE MATERIAL AND TO BE LEVEL AND IN THE SAME PLANE AS THE PLATFORM.

NOTES:

1. CONCRETE STRENGTH:  $f'_c = 4000$  PSI @ 28 DAYS  
REINFORCING ROD:  $F_y = 60,000$  PSI, ASTM A615 GRADE 60  
ALL CONCRETE WORK TO BE DONE PER CRSI CODE  
ALL FOUNDATION MATERIAL AND LABOR BY OTHERS  
ALWAYS WORK FROM CERTIFIED DRAWINGS
2. PIERS AS SHOWN ARE SIZED FOR 3,000 LB/SQ.FT. THE END USER SHALL BE RESPONSIBLE FOR DETERMINING WHETHER OR NOT SOIL CHARACTERISTICS MEET THE REQUIREMENT.
3. THE CONCRETE AND REBAR SPECIFICATIONS SHOWN ARE FOR A NATIONWIDE RANGE OF CONDITIONS AND MAY NEED MODIFICATION FOR LOCAL CONDITIONS. EMERY WINSLOW SCALE WILL NOT BE RESPONSIBLE FOR ANY CHANGES NECESSITATED BY ANY REGULATORY AUTHORITIES OR LOCAL SITE CONDITIONS.
4. APPROACH COPING (BULKHEAD) TO BE ON A COMMON PLANE WITHIN 1/4".
5. TOP OF REBAR MUST BE PLACED TO CLEAR ANCHOR BOLTS. ANCHOR BOLTS ARE TO BE INSTALLED AFTER FOUNDATION HAS CURED.
6. PIERS MUST BE INSTALLED WITH EXTREME CARE AND MUST NOT BE ALLOWED TO SHIFT.
7. THESE PLANS ARE NOT SUITABLE WHERE SOIL MIGRATION IN AN ISSUE. SOIL MUST BE STABLE AND NOT SUBJECT TO FLOODING OR OTHER POSSIBLE CAUSES OF SOIL MIGRATION THAT MAY RESULT IN SHIFTING OF THE PIERS.
8. BASE PLATES ARE NOT GROUTED. IF GROUTING IS REQUIRED ADD GROUT THICKNESS TO APPROACH DEPTH SHOWN.
9. THERE ARE (2) ANCHOR BOLTS PER BASE PLATE. THEY SHOULD BE PLACED DIAGONALLY FROM EACH OTHER.
10. APPROACH THICKNESS MAY BE 10" MINIMUM WHERE ALLOWED BY STATE REGULATIONS
11. REFER TO ASSEMBLY DRAWING FOR BASE PLATE ORIENTATION.

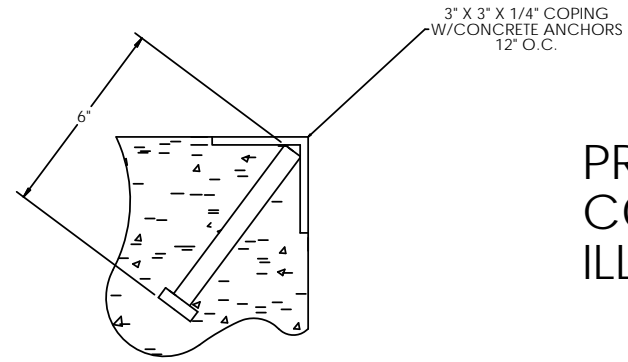


ALL SHARP CORNERS AND EDGES TO BE BROKEN		EMERY WINSLOW SCALE COMPANY SEYMOUR, CT. U.S.A. TERRE HAUTE, IN.	
UNLESS OTHERWISE SPECIFIED DIMENSIONS ARE IN INCHES		MACHINING FABRICATION	
XX: ±.01		XX: ±.13	
XXX: ±.005			
DATE	BY	DRAWN: S. JOHNSON	DATE: 07/24/2019
THIS DRAWING IS THE PROPERTY OF EMERY WINSLOW SCALE COMPANY SEYMOUR, CONNECTICUT. THE INFORMATION CONTAINED HEREIN IS CONFIDENTIAL AND IS NOT TO BE USED OR DISSEMINATED TO OTHERS WITHOUT THE EXPRESS WRITTEN CONSENT OF EMERY WINSLOW SCALE COMPANY.		CHECKED:	DATE:
ACAD FILENAME:		LAYERS USED:	
SCALE	FIRST USED ON	DRAWING NO.	REV.
1:60		196637	A

# CONCRETE LAYOUT

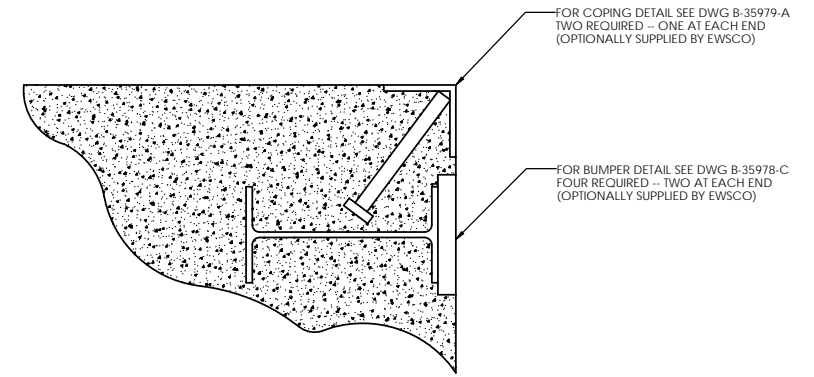
CONCRETE SCHEDULE			
	VOLUME (CUBIC YARDS)		
APPROACHES	9.4		
CLEANOUT	8.7		
PIERS	12.6		
TOTAL	30.6		
MISC. STEEL			
PIT COPING	3 X 3 X 1/4	23 LN. FT	113 LBS

VOLUME SHOWN FOR STATED PIER DEPTH.  
ADD ADDITIONAL CONCRETE FOR  
DEEPER PIERS AS NEEDED.

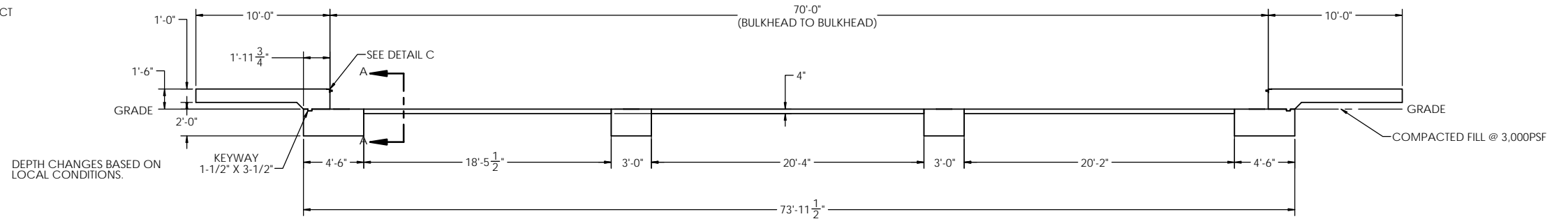
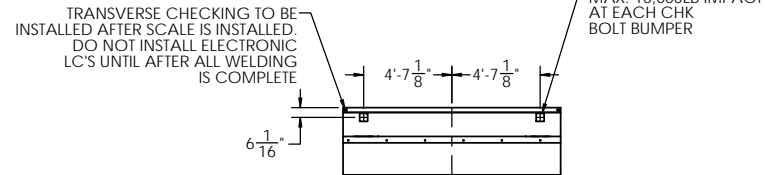
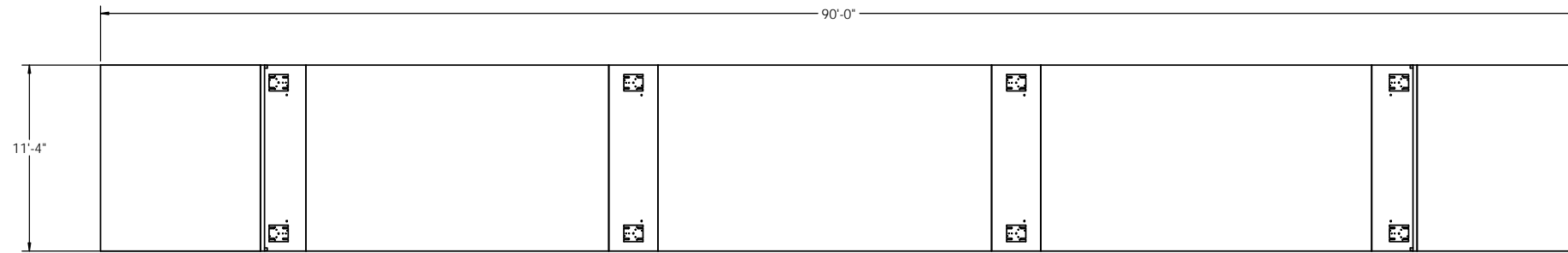


DETAIL C

PRELIMINARY NOT FOR  
CONSTRUCTION FOR  
ILLUSTRATION ONLY



DETAIL OF BULKHEAD INSTALLATION  
NO SCALE



LTR		DATE	BY	ALL SHARP CORNERS AND EDGES TO BE BROKEN. UNLESS OTHERWISE SPECIFIED DIMENSIONS ARE IN INCHES MACHINING FABRICATION XX: ±.01 XXX: ±.005	EMERY WINSLOW SCALE COMPANY SEYMOUR, CT. U.S.A. TERRE HAUTE, IN.		
THIS DRAWING IS THE PROPERTY OF EMERY WINSLOW SCALE COMPANY SEYMOUR, CONNECTICUT. THE INFORMATION CONTAINED HEREIN IS CONFIDENTIAL AND IS NOT TO BE USED OR DISSEMINATED TO OTHERS WITHOUT THE EXPRESS WRITTEN CONSENT OF EMERY WINSLOW SCALE COMPANY.		DRAWN: S. JOHNSON DATE: 07/24/2019				FOUNDATION, CONCRETE PIER 70' X 11', CONCRETE DECK	
CHECKED:		DATE:		SCALE	FIRST USED ON		DRAWING NO.
ACAD FILENAME:		LAYERS USED:		1:60		196637	A



# Untitled Map

Write a description for your map.

**Legend**

- Feature 1
- Path Measure
- Stockpile Location

Landfill

UFP Packaging

Tree Brand Packaging, In

Wooeltech Dr

Stockpile Location 1300 feet haul distance

Blair Dr

Rocky Ford Rd

Blackburn Convenience Center

Google Earth

Image © 2025 Airbus

900 ft



**TABLE 1**  
**Catawba County Waste Processing Facility Project**

**Bid Form**

Item	Description	Quantity	Unit	Unit Price	Extended Total
1	Bonds, Mobilization and Insurance	1	LS		
2	Silt Fence	250	LF		
3	Construction Entrance	1	LS		
4	Skimmer Basin Outlet	1	LS		
5	Sediment Pond Riser Barrel	1	LS		
6	Porous Baffles	470	LF		
7	Grubbing/Stripping	6825	CY		
8	Excavation and Backfill	7200	CY		
9	Excavation and Stockpile	3900	CY		
10	Catch Basins	7	EA		
11	12-inch RCP	120	LF		
12	24-inch RCP	184	LF		
13	30-inch RCP	812	LF		
14	Asphalt Paving	1550	SY		
15	ABC Paving	10010	SY		
16	Sidewalk	100	SY		
17	Concrete Scale Ramps	4	EA		
18	Scale Foundation/Washout Slab	2	EA		
19	Scales	2	EA		
20	Stabilization	5.1	AC		
21	Bollards	12	EA		
22	Water Service	1	LS		
23	Sewer Service - Septic System	1	LS		
24	Chain Link Fence and Gates	3975	LF		
25	Pavement Striping	1	LS		
26	Concrete Walls/Foundations (Tire Pad)	1	LS		
27	Concrete Slab (Tire Pad)	1	LS		
28	PEMB Canopy	1	LS		
29	General Conditions-Building	1	LS		
30	Concrete	1	LS		
31	Masonry	1	LS		
32	Steel Carpentry	1	LS		
33	Moisture & Thermal Protection	1	LS		
34	Doors, Windows, & Glass	1	LS		
35	Finishes	1	LS		
36	Specialties	1	LS		
37	Plumbing	1	LS		
38	Mechanical	1	LS		
39	Electrical	1	LS		
40	Miscellaneous Work & Cleanup	1	LS		
<b>TOTAL AMOUNT</b>					

In words: \_\_\_\_\_

Bidder: \_\_\_\_\_

Date: \_\_\_\_\_