

VARIANCE

Topographic



catawba county
MAKING. LIVING. BETTER.

Case: VAR 2024-01

Land Owner: Brooks Agnew

PIN: 3619-0907-7168

Address: 3925 Cherry Grove Dr

Request: front & side setback variance

Zoning: R-20

Subject Parcel Size: 1.6 Acres

 Subject Parcel

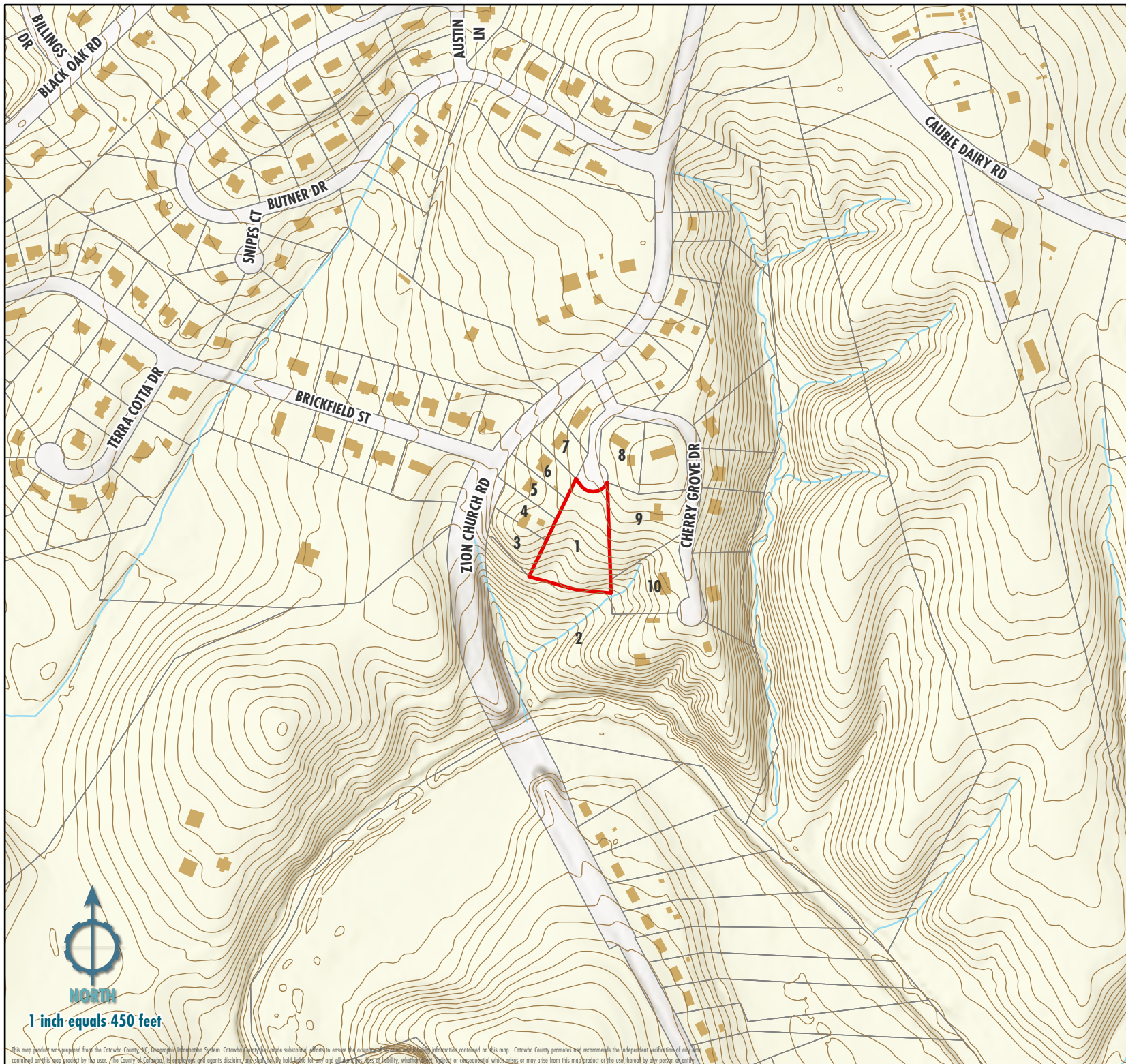
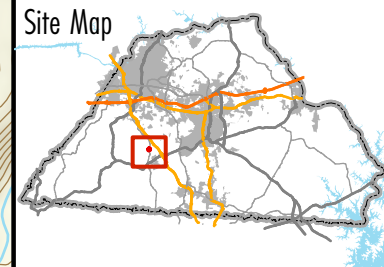
 Parcels

 Structures

 Contour Lines

 Creeks

Site Map



NORTH

1 inch equals 450 feet

This map product was prepared from the Catawba County GIS Department information system. Catawba County does not make any warranty to ensure the accuracy or completeness of the information contained on this map. Catawba County promotes and recommends the independent verification of any data contained within this map product by the user. The County of Catawba, its employees and agents disclaim any liability for any and all damages, loss or injury, whether direct or consequential which arise or may arise from this map product as the user thereof by any person or entity.