







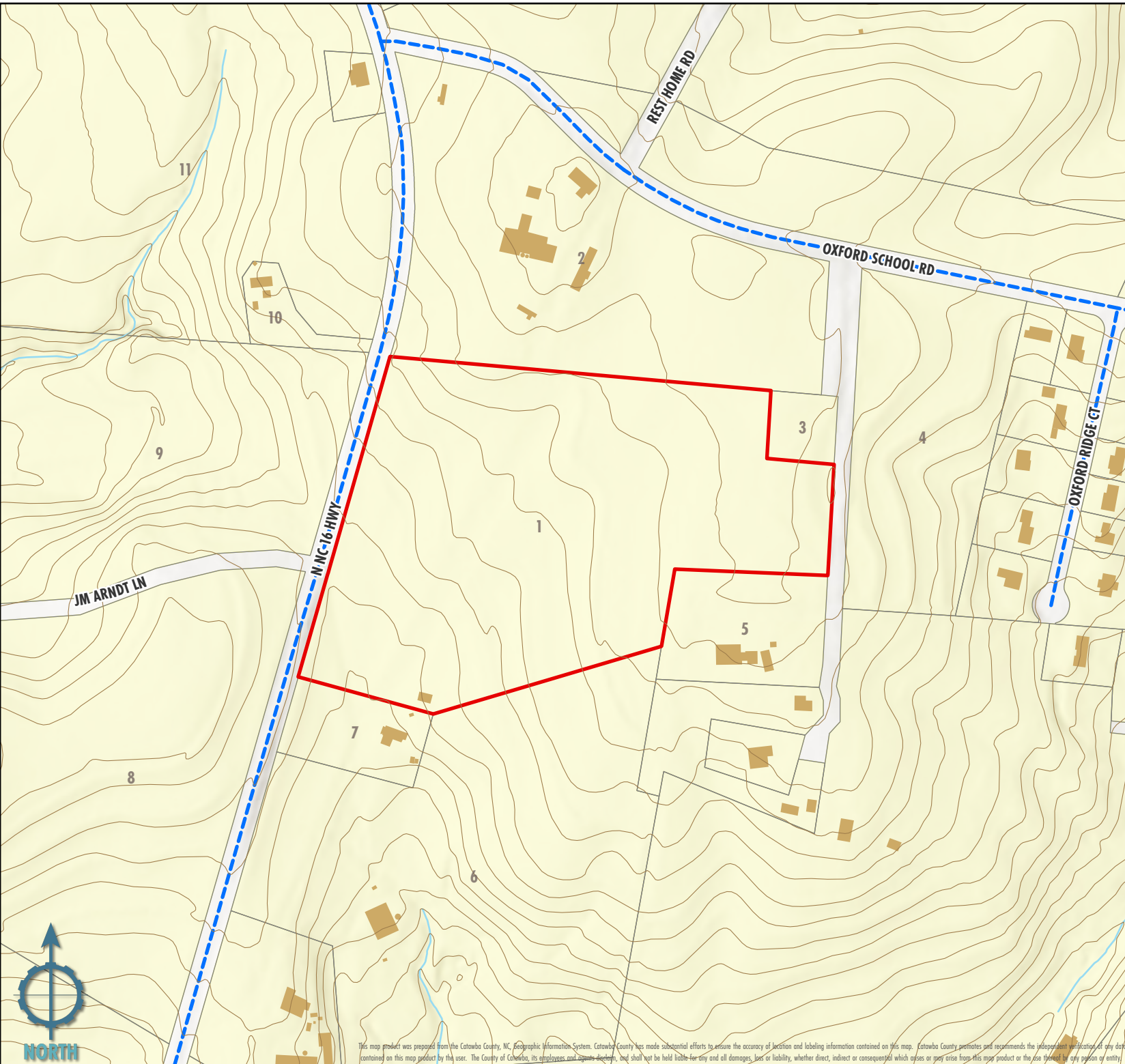
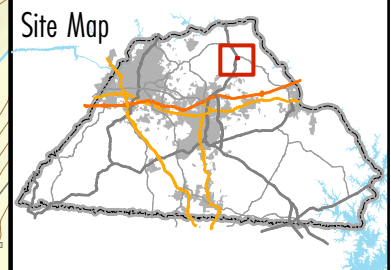
CATAWBA COUNTY PLANNING  
**Special Use Permit**  
**Cell Tower**



Case: SU 2024-01  
Applicant: Towerco 2013 LLC  
Land Owner: Lee A. Setzer  
PIN: 375415631766  
Address: 5198/5280 N NC 16  
Request: New 199' Tower  
Zoning: R-30  
Overlays: WP-O (WS-IV Protected)  
Agricultural District: General  
Subject Parcel Size: 21.13 Acres

-  Subject Parcel
-  Parcels
-  Structures
-  Contour Lines
-  Water Lines
-  Creeks

1 inch equals 350 feet



This map product was prepared from the Catawba County, NC, Geographic Information System. Catawba County has made substantial efforts to assure the accuracy of location and labeling information contained on this map. Catawba County neither warrants nor recommends the independent verification of any data contained on this map product by the user. The County of Catawba, its employees and agents, disclaims, and shall not be held liable for any and all damages, loss or liability, whether direct, indirect or consequential which arises or may arise from this map product or the use thereof by any person or entity.