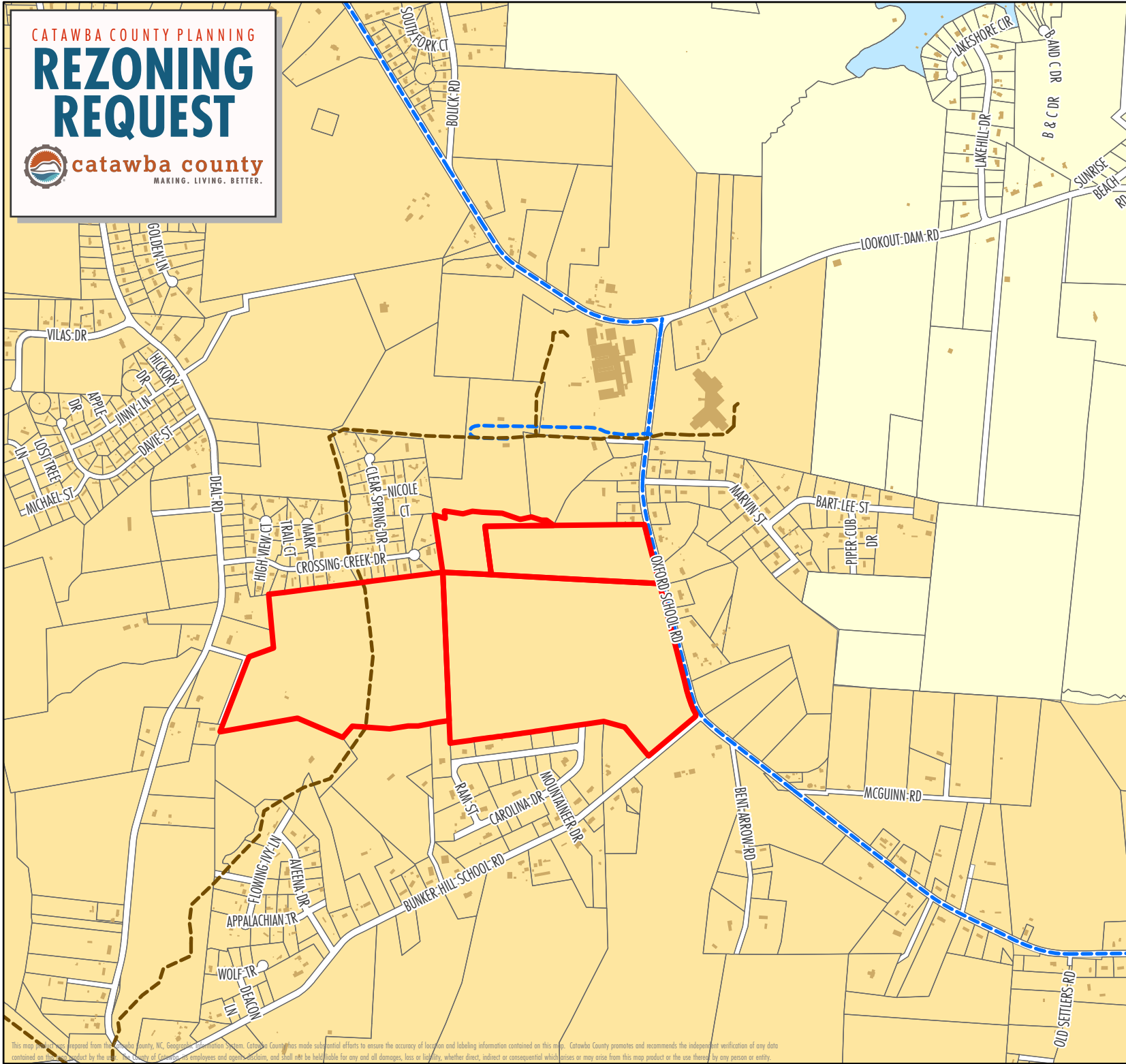


CATAWBA COUNTY PLANNING






REZONING REQUEST



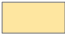

catawba county
MAKING. LIVING. BETTER.



Subdivision: Oxford Glen
Applicant: VR Farms
Land Owners: David Hunsucker
(Family limit partnership);
Barbara Hunsucker; Michael Stewart
PIN: 376304948473, 377303038412
377303049320, 376304838423
Request: 161 single-family lots
Zoning: R-30
Overlays: WP-0 (WS-IV Protected Area)
Subject Parcel Size: 119.957 acres
Hearing Date: May 28, 2024

-  Subject Parcels
-  Parcels
-  Structures
-  Sewer Lines
-  Water Lines

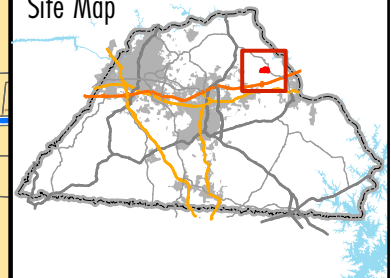
County Zoning

-  R-30
-  R-40



1 inch equals 1,200 feet

Site Map



This map was prepared from the Catawba County, NC, Geographic Information System. Catawba County has made substantial efforts to ensure the accuracy of location and labeling information contained on this map. Catawba County promotes and recommends the independent verification of any data contained on this map. The Catawba County employees and agents, officers, and staff will be held liable for any and all damages, loss or liability, whether direct, indirect or consequential which arises or may arise from this map product or the use thereof by any person or entity.