



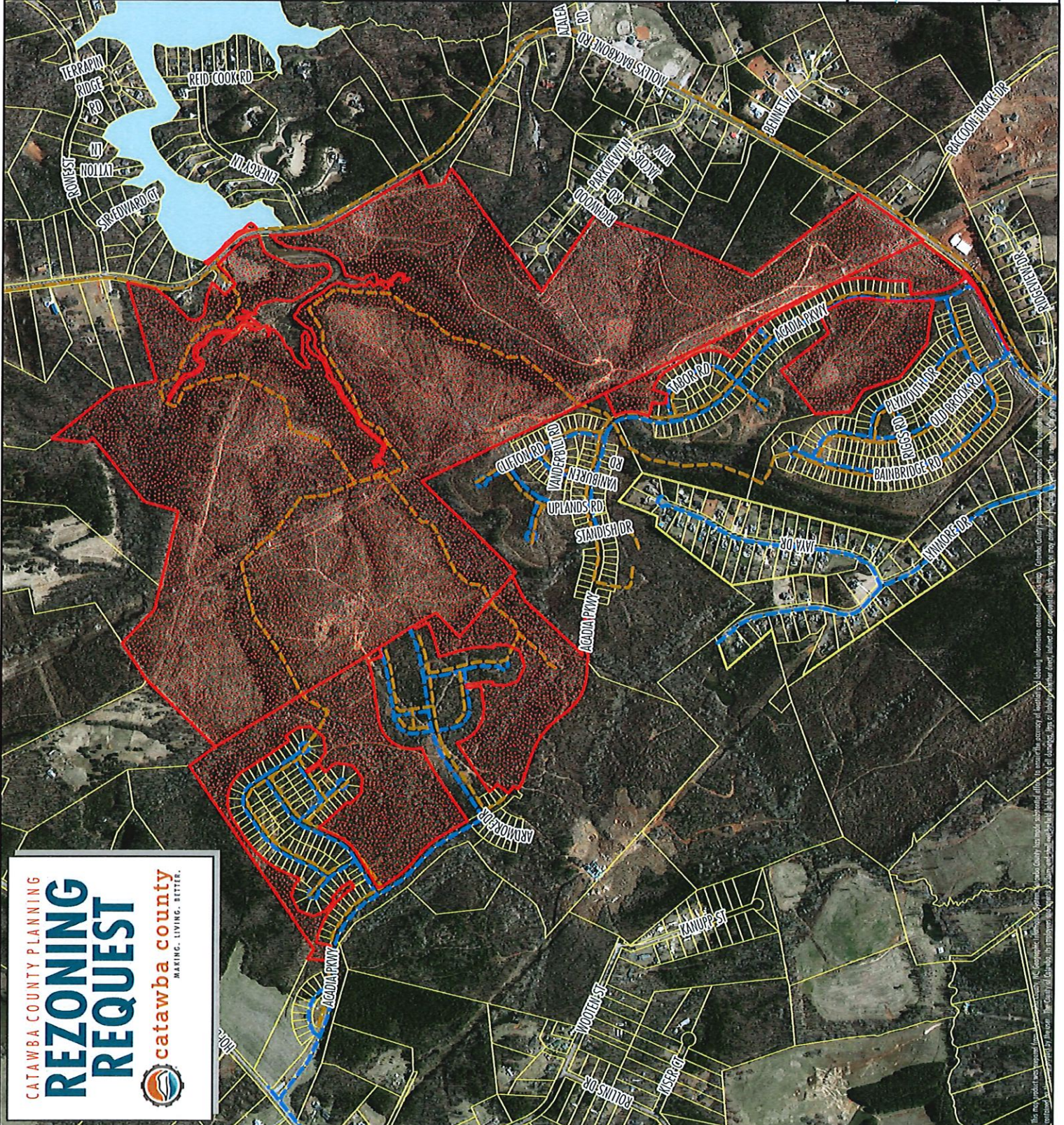
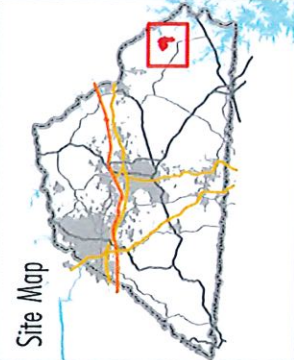



Subdivision: Laurelbrook Ph 2 Pods A-D  
 Applicant: BBC Laurelbrook, LLC  
 Land Owners: Joseph and Kathy Garmon,  
 BBC Laurelbrook LLC  
 PIN: 460904021577, 460902970884,  
 460902659715  
 Request: 506 single-family lots  
 Zoning: PD-CO  
 Overlays: WP-O (WS-IV Protected Area)  
 Subject Parcel Size: 413.65 acres  
 Hearing Date: May 28, 2024

-  Subject Parcels
-  Parcels
-  Sewer Lines
-  Water Lines



1 inch equals 1,103 feet



**CATAWBA COUNTY PLANNING**  
**REZONING REQUEST**  
  
**catawba county**  
 MAKING. LIVING. BETTER.

This map was prepared by the County Planning Department. Catawba County has made every effort to ensure the accuracy of the information contained herein. Catawba County is not responsible for any errors or omissions in this map. The County of Catawba, its employees, agents, consultants, or subcontractors do not warrant, represent, or make any claim of accuracy for this map.