





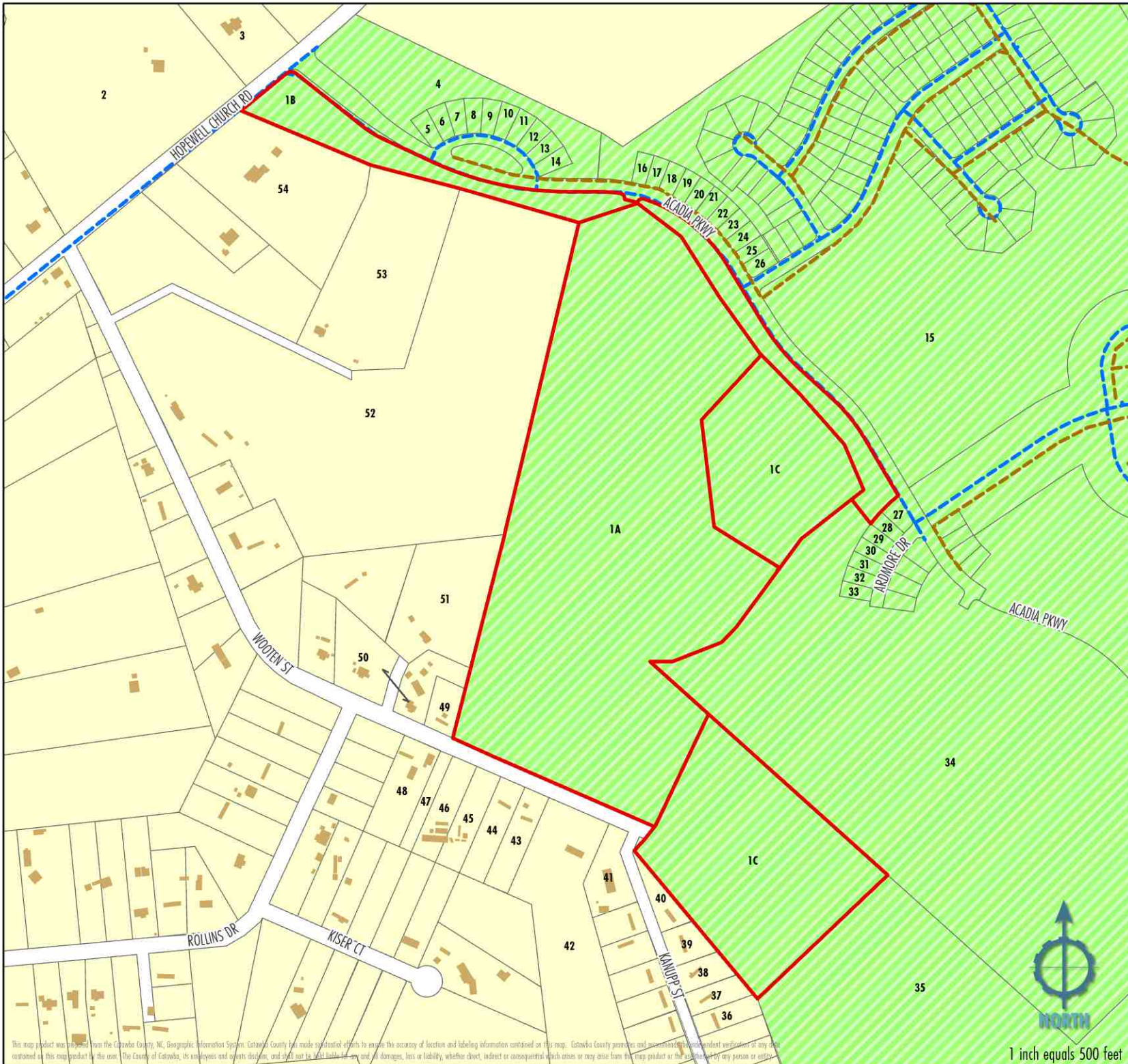
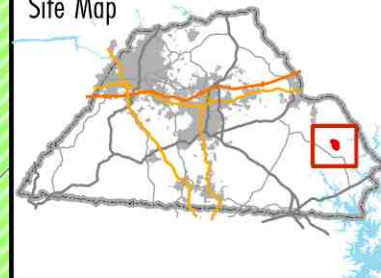
CATAWBA COUNTY PLANNING
**REZONING
REQUEST**



Subdivision: Laurelbrook Phase 2 Pod E
Applicant: Prestige Corporate Dlvpr, LLC
Land Owner(s): Jerome and Karen Eades,
BBC Laurelbrook LLC
PIN: 460901478416,
460902569543, 460901473536
Request: 82 single-family lots
Zoning: PD-CD
Overlays: WP-O (WS-IV Protected Area)
Subject Parcel Size: 34.46 acres
Hearing Date: March 26, 2024

-  Subject Parcels
-  Parcels
-  Structures
-  Sewer Lines
-  Water Lines
- County Zoning**
-  PD-CD
-  R-40

Site Map



1 inch equals 500 feet

This map product was prepared from the Catawba County, NC, Geographic Information System. Catawba County has made substantial efforts to ensure the accuracy of location and labeling information contained on this map. Catawba County promises and warrants independent verification of any data contained on this map product for its use. The County of Catawba, its employees and agents disclaim, and shall not be held liable for any and all damages, loss or liability, whether direct, indirect or consequential which arise or may arise from the map product or the use thereof by any person or entity.